

13CPF

RACCORDO IN PPR-100 PER SALDATURA DI TESTA A TESTA | PPR 100 FITTING FOR BUTT WELDING



Intervallo temperature operative min -20°C
Range of permissible temperature max 95 °C

Potabilità e contatto alimentare
Potability and Food contact

DM 174 06/04/2004, DM 23/04/2009, REG. UE 10/2011, KTW RECOMMENDATIONS, DVGW-W 270, BS 6920, FDA CRITERIA IN 21, NSF61, NSF 51.

Temperatura e Pressione d'esercizio
Working temperature & Working Pressure

SDR 11

20°C - 15,4 bar
60°C - 7,7 bar
70°C - 5,1 bar

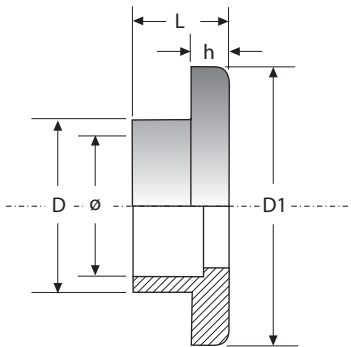


NORME DI RIFERIMENTO / REFERENCE STANDARDS

Sistema/System UNI EN ISO 15874, ISO 15495, DIN 16962, BS 4991, ASTM F238, CSA B137.11

Flange/Flanges: UNI EN1092-1, ISO 7005-1, DIN 2501.1, BS 4504, DIN 16962-12

Prove/Tests: UNI EN ISO 15874, DIN 16962, ISO 1133, ISO 3126, ISO1167, ISO 2501, ISO 9854.



ø	D	D1	L	h
50	58.5	88	33	12
63	74.5	102	37	14
75	89.5	122	40	16
90	106.5	138	44	17
110	130	158	47.5	18
125	188	162	56.5	25
160	160	207.5	96.5	25

